

OSI VOLTAGE AND CURRENT DISCONNECT SWITCH MODEL U3889

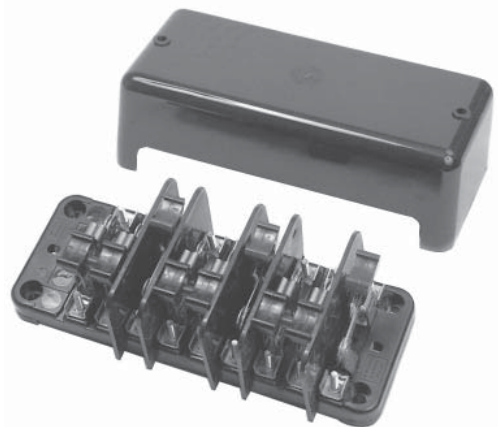
3-PHASE SWITCH ASSEMBLY

DESCRIPTION

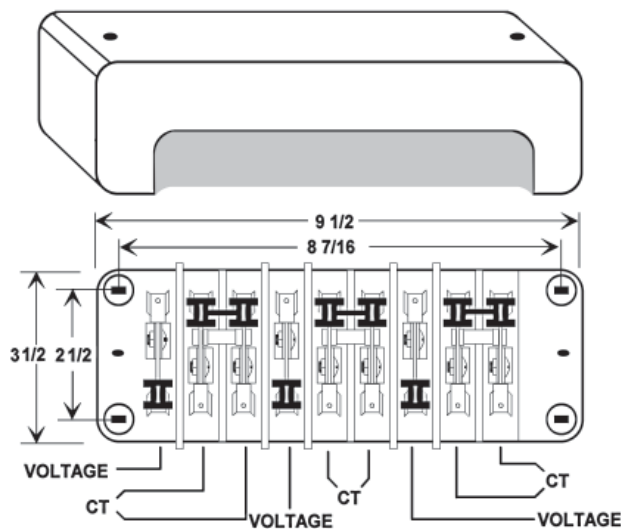
This switch assembly is designed to provide a disconnecting means for your Watt transducer or meter. Not only can this switch assembly provide isolation from line voltages, it also will short out current transformer secondaries to prevent transformer damage which may occur when the circuit is opened under load.

FEATURES

- 3-Phase Switch Assembly
- 30 Amp Rated
- 600Vac
- UL Recognized



DIMENSIONS & CONNECTION DIAGRAM



SWITCH DIMENSIONS 9 1/2" X 3 1/2" X 2 3/4"
COVER DIMENSIONS 10 1/8" X 4 5/8" X 3 1/8"

Dwg# 0902-00892-B

NOTES

- The bottom side of the switch is connected to the circuits being measured.
- The top side of the switch is connected to the Watt transducer or meter.
- The switch handles are color-coded red for voltage and black for current.
- The black plastic cover is constructed so that all switches must be in the closed position before the cover can be sealed.