

OSI HIGH-PERFORMANCE 4-DIGIT LED METER MODEL OFC-

MICROPROCESSOR-BASED

DESCRIPTION

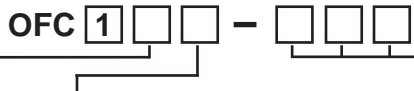
The OFC series panel-mount meters provide a 4-digit microprocessor-based delta-sigma A-to-D converter with 16-bit (65536 counts) resolution. Available with or without setpoint relays.

FEATURES

- Convenient front-panel buttons for setpoint, peak, valley, tare and set-up menu.
- Optional setpoint relays (2)



MODEL SELECTION



BASE METER		INSTRUMENT POWER		SIGNAL INPUT	
0	(no setpoint relays)	1	120Vac, 50/60Hz	100	4-20mA dc
1	2 setpoint relays	8	10-30Vdc, isolated*	120	0-10Vdc
				925	AC ammeter, 5A**

* 750V isolation between power supply and signal input.
 ** 925 models include an external CT.

ORDERING INFORMATION

Example: 4-digit display with setpoint relays, 120Vac instrument power, and 5Aac input.

OFC111-925

SPECIFICATIONS

PHYSICAL

Size Fits 1/8 DIN cutouts (see pg 2)
 Display Bright 0.6" tall, high-efficiency red LED
 Range -1999 to +9999
 (4 digits plus negative sign and decimal point)
 Display Window.... Non-glare cast acrylic, ruby red filter
 Bezel Black, high-impact ABS plastic, UL 94V0
 Connections socketed screw terminal connectors
 Mounting Hardware..... Provided (attached to meter)

INPUT

Type (see chart)
 Frequency -100 & -120 models dc
 -925 models 50/60Hz
 Impedance -100 models 10Ω
 -120 models 1MΩ
 Over/Under Range Indication:
 Meter displays “-ur-” or “-or-” when input exceeds min/max displayable range or min/max input range.
 Connectors... all models..... Socketed screw terminals

INSTRUMENT POWER

101 & 111 models 85-140Vac, 47-63Hz, 3VA max.
 108 & 118 models..... 10-30Vdc, 150mA max.,
 500mV max ripple allowed

CONTROLS

Setup and calibration menus are accessed via five front-panel push-buttons. (See 7007-00092-A manual)

DISPLAY

Modes Track, Peak, Valley
 Update Rate 1-16 per second (selectable)
 Scaling (Decimal Point Location)
 Programmable, for 0, 0.0, 0.00 or 0.000 precision.
 Response Time (for F.S. step)..... 0.5s
 Setpoint Relays (optional) 200Vac/dc, 1A max.,
 Independently programmable as NO or NC

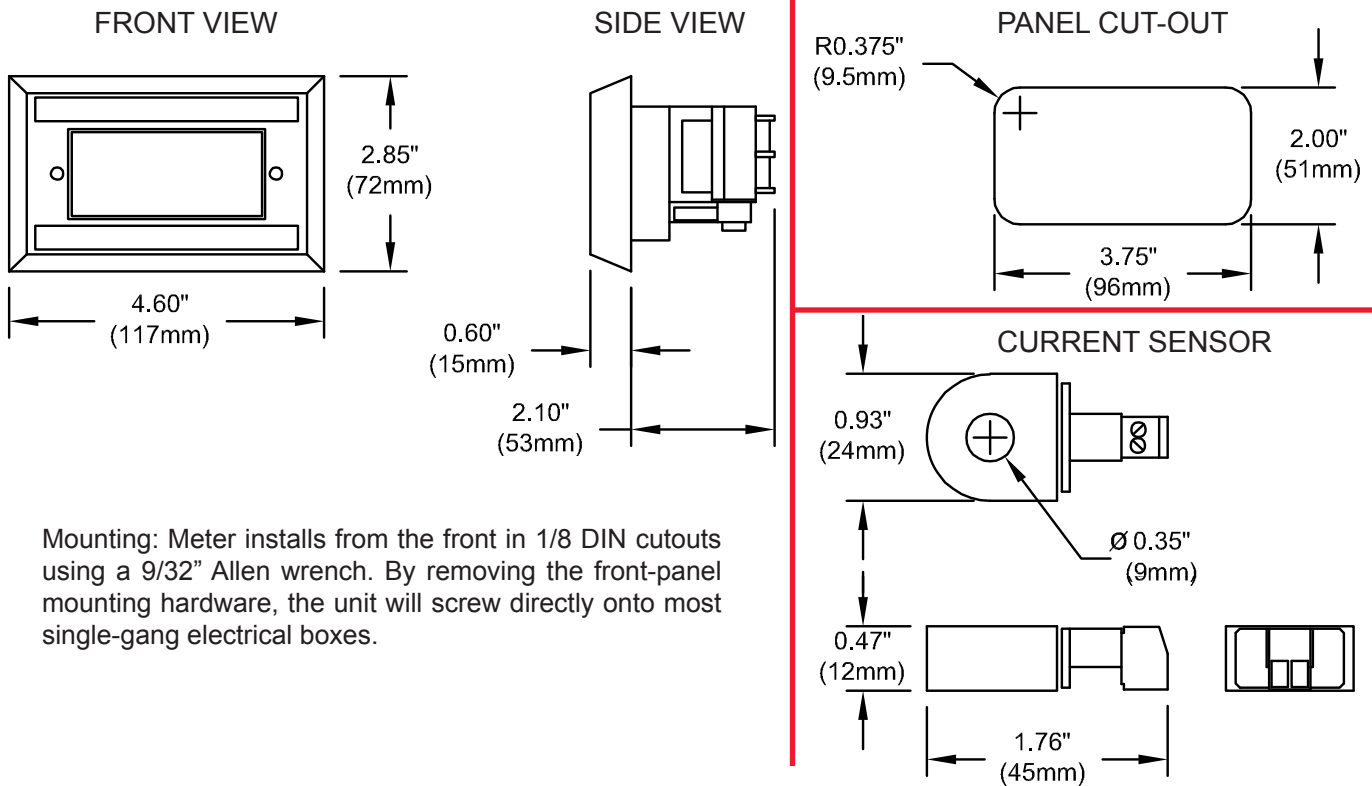
ACCURACY & RESOLUTION

Over Full Operating Temperature Range:
 -100 & -120 models..... <±0.05% F.S.
 -925 models (RMS value of input) <±0.1% F.S.
 At Fixed Temperature:
 -100 & -120 models..... <±0.02% F.S.
 -925 models <±0.05% F.S.
 A/D Converter 16-bit: 65536 counts of resolution
 A/D Conversion Rate 4000 per second

TEMPERATURE

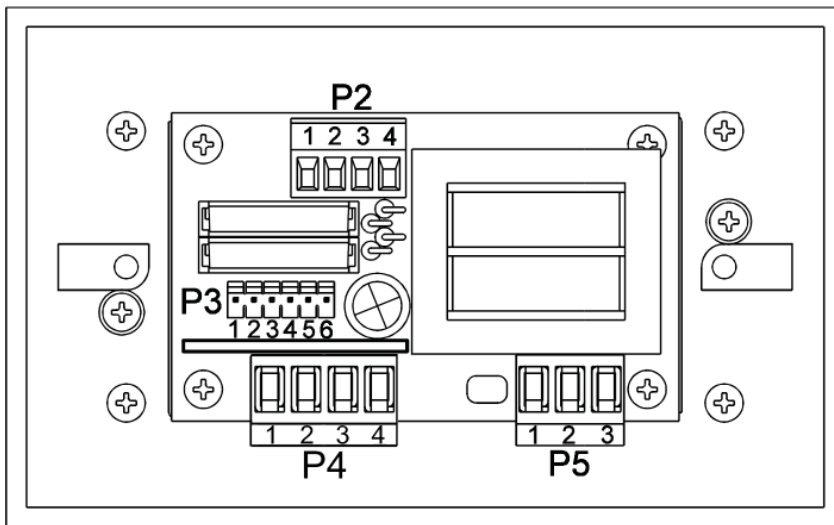
Operating Range -25°C to 80°C
 Storage Range -55°C to 80°C
 Drift <0.1% per 20°C change in ambient temperature

DIMENSIONS

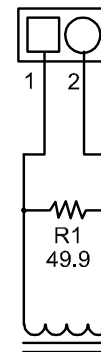


Mounting: Meter installs from the front in 1/8 DIN cutouts using a 9/32" Allen wrench. By removing the front-panel mounting hardware, the unit will screw directly onto most single-gang electrical boxes.

CONNECTION DIAGRAM



CURRENT SENSOR



NOTE: Pin 1 is indicated by square symbol on each connector.

OFC SERIES CONNECTIONS	
CONNECTOR	FUNCTION
P2	Setpoint Relay Output (OFC111 & OFC118 only)
P3	Remote Control Inputs (emulates front-panel buttons)
P4	Signal Input
P5	Instrument Power

Refer to the OFC Series Operation and Installation Guide (7004-00092-A) for full connection details and menu functions.

Dwg# 0902-00950-B Rev --