

OSI EXTENSION MODULES FOR A210-A230S MODEL MM/COM20X

MM/COM201



Modbus, data logger, RS232/485 interface, synchronizing input

SPECIFICATIONS

Protocol Modbus RTU for SCADA Interface RS232/485, switchable Synchronizing input synchronizing interval or tariff switching Baud rate... 1200, 2400, 4800, 9600, 19200

Data logger with A210

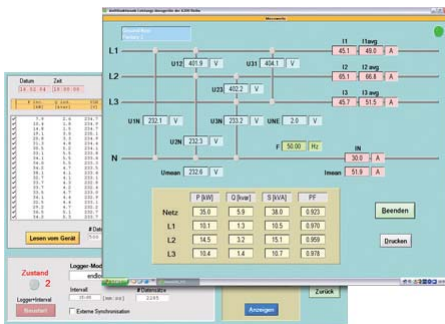
P_{int} avg. active power values (incoming/outgoing)
 Q_{int} avg. active power values (IND/CAP)

Data logger with A230/A230s

P_{int} avg. active power values (incoming/outgoing)
 Q_{int} avg. reactive power values (incoming/outgoing) or IND/CAP
 S_{int} avg. apparent power values and 9 additional free programming average values

Amount of data

1 value 166 days
 2 values 83 days
 14 values 12 days



For reading & selection of values, optional A200plus Software is available at no additional cost.



MM/COM202



2 Analog Outputs

SPECIFICATIONS

Input values

A210 U, I, I_{avg} , I_n , P, Q, S, F, $\cos \Phi$
 A230 (in addition to above) zero-displacement voltage, asymmetric voltage, THD U, THD I, Voltage, Current Avg. value

Output 0-20mA, 4-20mA, inverting

Limitation min 0/3.7mA, resp. max. 21mA

Burden voltage 8V

Accuracy 0.1% (without A2xx)

Number of channels 2, electrically-isolated

MM/COM203



Ethernet, real-time clock, comprehensive data logger.

SPECIFICATIONS

Protocol Modbus over TCP/IP, HTTP

Real-Time Clock battery backup, synchronization via LAN or external

Data Logger... up to 1 year with time stamp

Terminals:

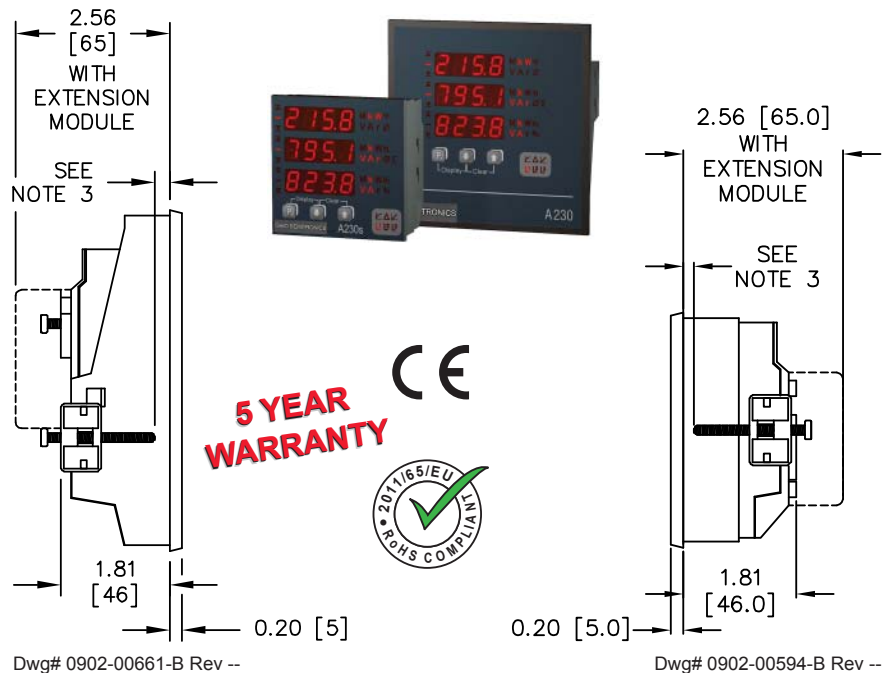
Ethernet RJ45-port, 10/100 Base-Tx

Tariff switching and synchronizing input via pluggable screw terminals

Synchronizing input 5V-300Vac, 1-500Hz

Tariff Switching 5V-300Vac/dc

DIMENSIONS



Dwg# 0902-00661-B Rev --

Dwg# 0902-00594-B Rev --

NOTES:

1. All dimensions in inches [mm].
2. Panel cut-out: 5.43 +0.03/-0.00 [138 +0.8/-0.0] x 5.43 +0.03/-0.00 [138 +0.8/-0.0]
3. Panel dimensions (thickness, min/max): 0.08-1.00 [2-25.4]
4. Refer to Operating Instructions manual for details on attaching extension modules.